

*'It's about our life, our health,  
our care, our family and  
our community'*



**Better care together**

Leicester, Leicestershire & Rutland health and social care

# ***Better care together in Leicester, Leicestershire and Rutland***

[www.bettercareleicester.nhs.uk](http://www.bettercareleicester.nhs.uk)

October and November 2018





## We need to improve care for a changing population

Our local population is

**growing**



The old population is increasing most and is predicted to increase by **11%** in next five years



Limited a little



Limited a lot

Predicted increase in people aged 65+ whose day-to-day activities are limited by a long-term illness

Long term illnesses are also

**increasing**



There are more of us and either as a result of ageing or lifestyle choices **more of us are ill more of the time**



This leads to a **greater demand** for health and care services





## Despite that pressure....

- No matter what we read in the papers...people are still proud of the NHS;
- People from other countries routinely visit the NHS to witness how we do so much with so relatively little;
- 22,000 dedicated NHS staff work alongside 32,000 social care staff to provide the best care
- But the reality is that whilst the world has changed in the last 20 years, the model of the way we care hasn't (much);
- **We need to provide more efficient and effective services that have patients at their heart.....**







# What patients have told us what they want...

I want to stay in my own home or in my local area

I don't want my operation cancelled

I want the knowledge to care for myself and stop myself from getting sick

When I'm discharged from hospital I want it to go smoothly

I want better access to GPs and nurses

More care at home is good in principle but how do you know it will work and you don't need as many hospital beds?

I want all the services to work together so I don't have to keep repeating my story or attending so many appointments

If I have to go into hospital I want to know that I'll be looked after when I leave

Being cared for at home will put more pressure on my family



# We are improving a lot of things



Know your history to  
help anticipate and plan  
for your health needs



Care for the most  
vulnerable and the  
most frail citizens



Support children and  
parents so they have the  
very best start in life



Are there when it  
matters most and  
especially in a crisis



Help support people and  
their loved ones when life  
comes to an end.



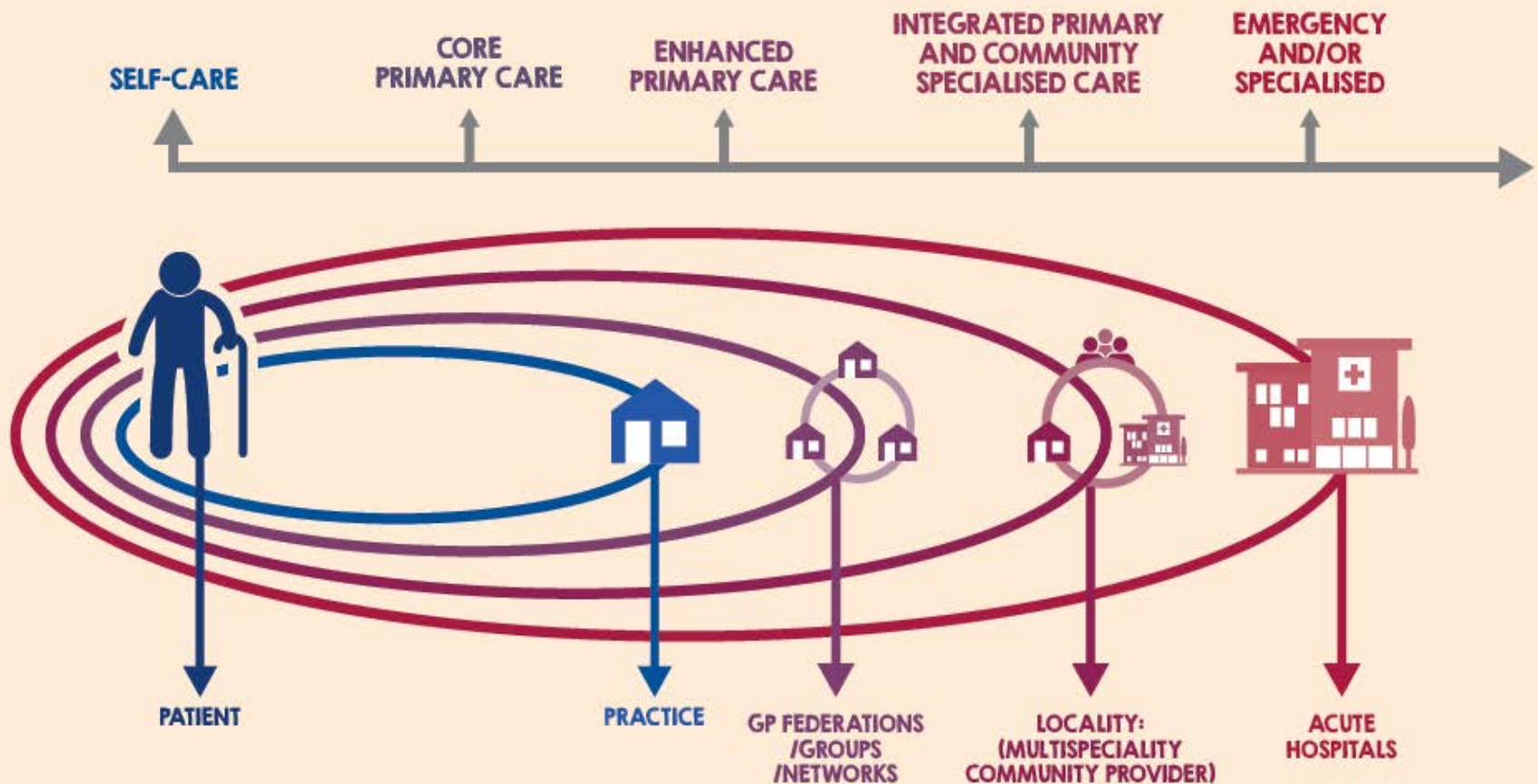
Help people stay well  
in mind and body  
throughout their life



**Better care together**

Leicester, Leicestershire & Rutland health and social care

# Our Model of care





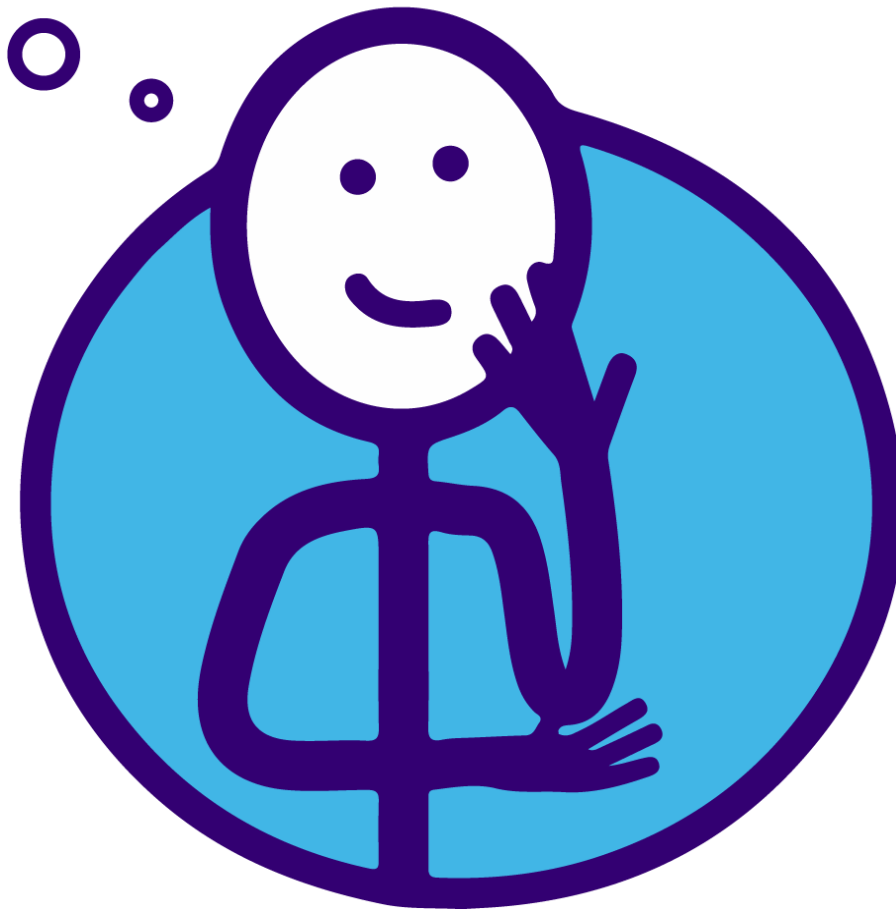
**Better care together**  
Leicester, Leicestershire & Rutland health and social care

**Help us improve  
healthcare services  
in the community  
and at home**

**Patients, family carers and  
frontline staff have told us  
about their experiences**

**This knowledge will help us to  
develop plans**

**You can share your views on  
those plans later this year**





# Why do we need to change our service configuration?

**We must improve clinical outcomes for our patients**

**We must be able to meet growing demand for both planned and emergency care**

**We know our present three acute site is an accident of history, not design**

**We must reduce the number of operations cancelled due to emergency pressures**

**We need to ensure that our medics and nursing are not spread too thinly across 3 sites**

**We want to provide a better experience for patients, cancelling less operations**

**We want to treat patients in modern environments**

**We must end duplication (and sometimes triplication) of services**

**We need to create services that will cater for future need**

**We need to end our staffing challenges and make Leicester a place people want to work**





## Combining our Level 3 Intensive Care Services onto two sites

- For some considerable time the ICU at the General has faced significant operational difficulties; the clinical team said that maintaining safe high quality intensive care was in real jeopardy because of:
  - changes in the way medical training for intensive care staff is structured had led to the removal of medical training designation status at the General
  - the imminent retirement of a number of experienced consultants
  - recruitment to substantive posts at the General had failed repeatedly owing largely to the loss of training designation and the reduction in patient acuity, making the General posts a less attractive proposition for applicants
  - a national shortage of experienced critical care nursing and medical staff compounding recruitment problems.
- We sought to resolve this problem; in April 2017 we were given £30m of Government funding



# New Emergency Department



**Better care together**  
Leicester, Leicestershire & Rutland health and social care





# We want to invest £367m in local hospitals

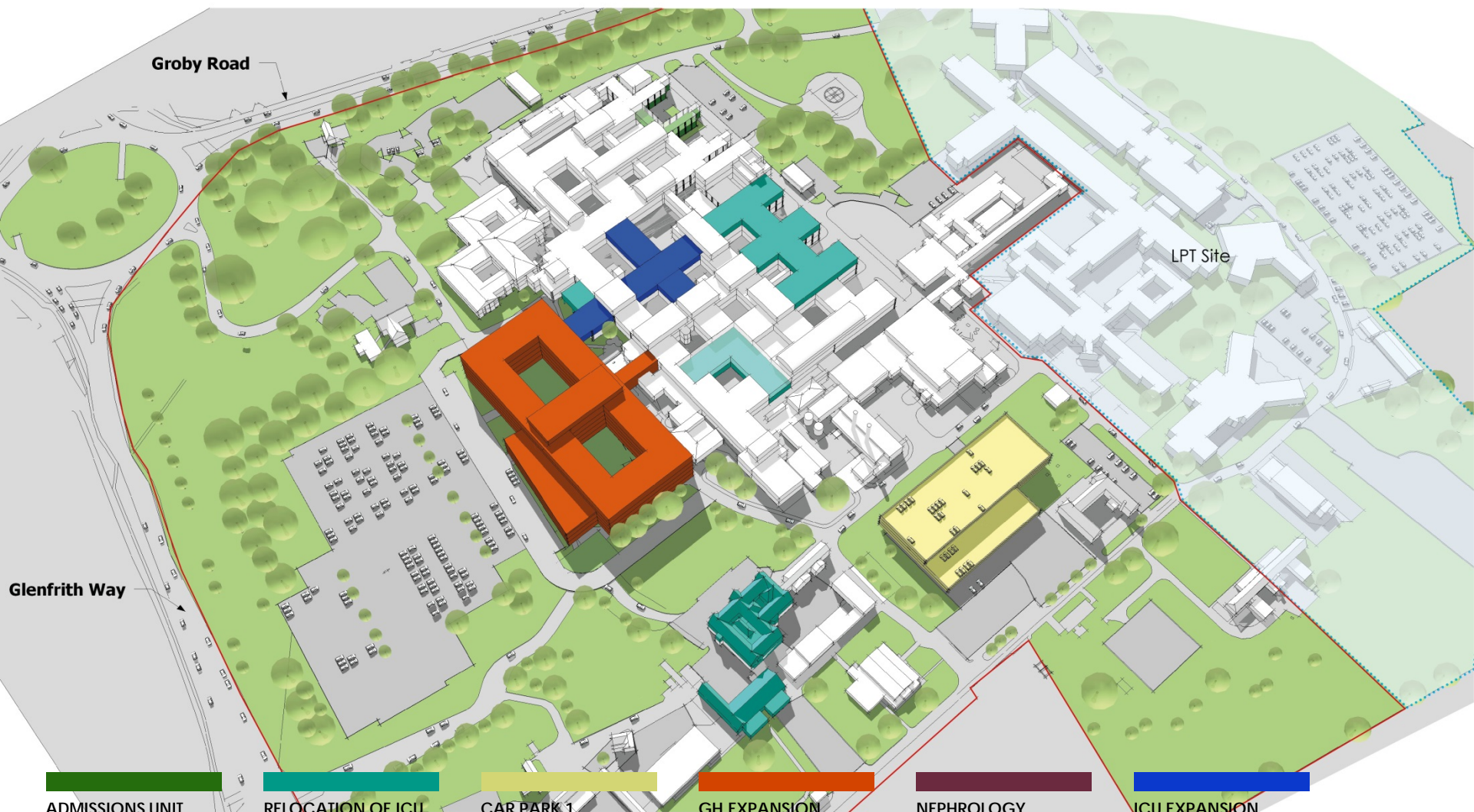


**Better care together**  
Leicester, Leicestershire & Rutland health and social care

## £138m Treatment Centre at the Glenfield



**Artist Impression**



**ADMISSIONS UNIT  
PHASE 1**

Completed

Mixed new/ Refurb: £3m  
920m<sup>2</sup>

**RELOCATION OF ICU  
CAPACITY AND  
ASSOCIATED SERVICES**

Completed

Mixed new/Refurb: £29m  
4,792m<sup>2</sup>

**CAR PARK 1**

Completed

New Build: Commercial

**CAR PARK 2**

Completed

New Build: Commercial

**GH EXPANSION**

Completed

New Build: £159m  
31,116m<sup>2</sup>

**NEPHROLOGY**

Relocated into new  
wards within Ward 36 &  
37.

**ICU EXPANSION**

Internal refurbishment to  
expand the current Adult ICU.

Jul 2022-Feb 2023  
Mixed Refurb: £4m  
1,286m<sup>2</sup>





**Better care together**  
Leicester, Leicestershire & Rutland health and social care

# £88m Maternity Hospital at the Royal Infirmary



**Artist Impression**

# £35m to create a dedicated Children's Hospital at the Royal Infirmary



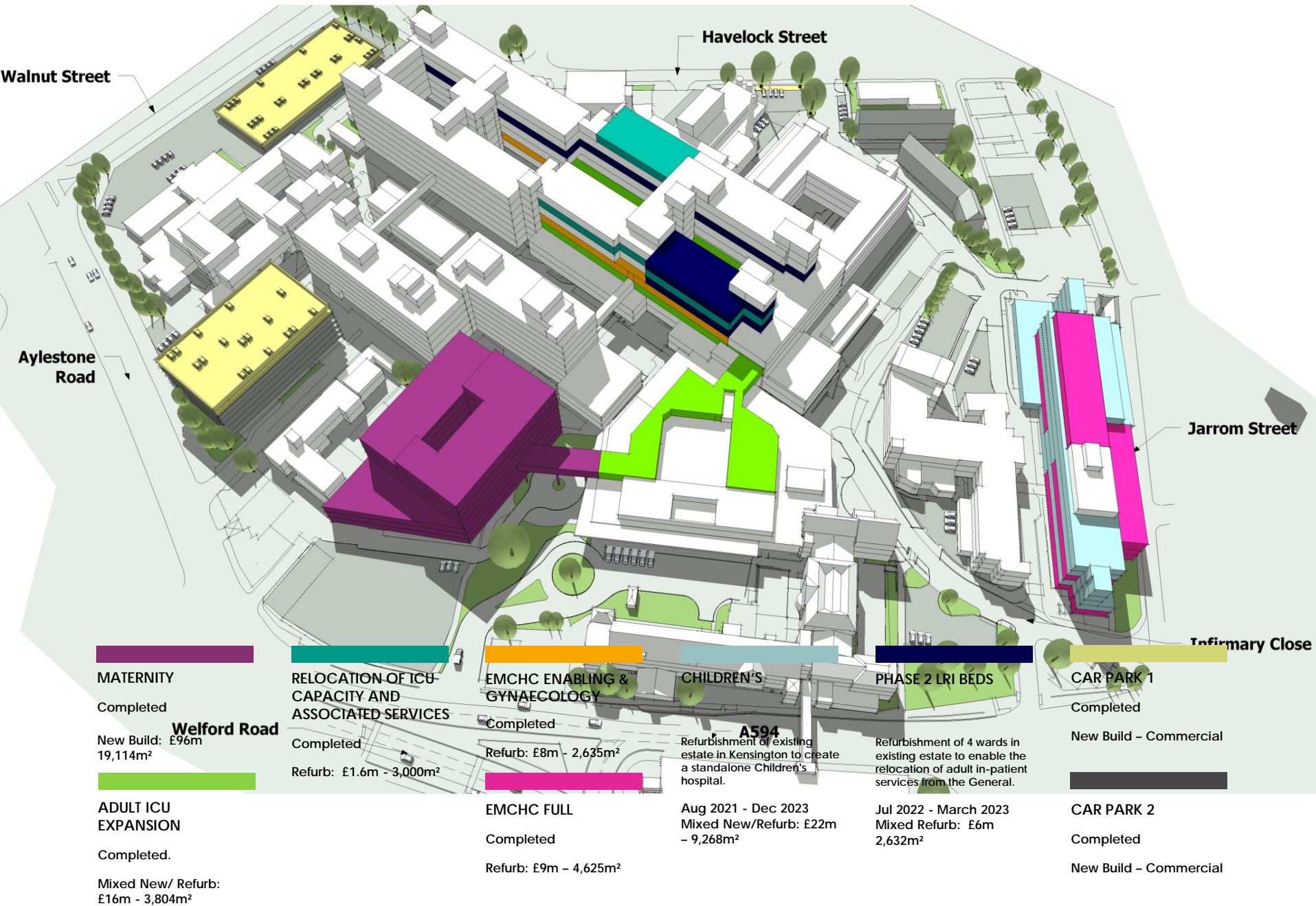
Better care together  
Leicester, Leicestershire & Rutland health and social care



Artist Impression



# Leicester Royal Infirmary





# Primary care hub at the General with co-located imaging services for GPs



**Better care together**  
Leicester, Leicestershire & Rutland health and social care



**Artist Impression**



# Leicester General Hospital



**Better care together**  
Leicester, Leicestershire & Rutland health and social care





# Next steps...

We continue to engage with people and understand the impact of improvements



We continue to work through the local and national approval processes and are hopeful of securing funding for our plans. On receipt of approval and funding we will then formally consult with local people

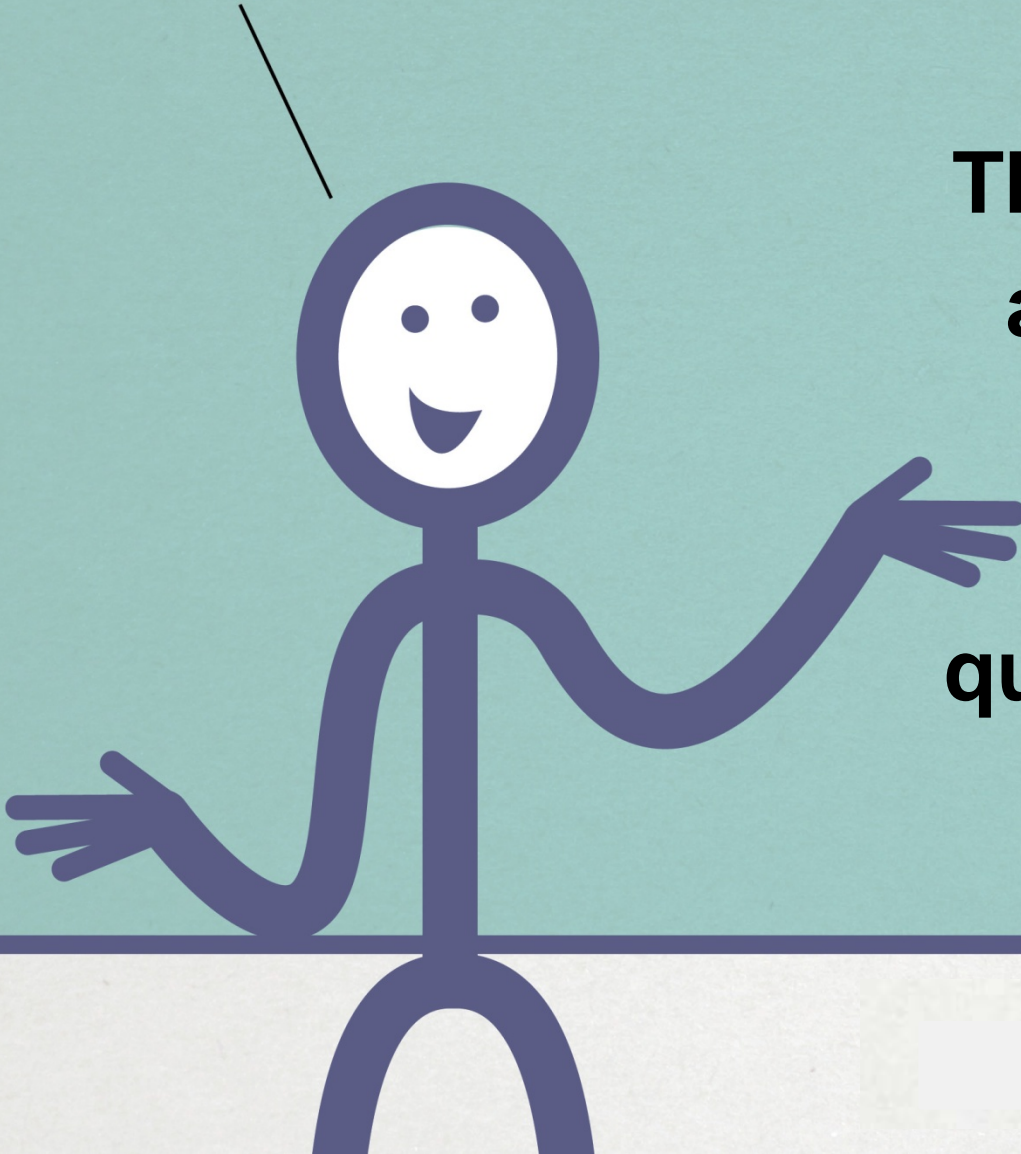




*'It's about our life, our health,  
our care, our family and  
our community'*



**Better care together**  
Leicester, Leicestershire & Rutland health and social care



**Thank you for coming  
along this evening!**

**Please share your  
questions, comments  
and reflections**